

Kirklees (South)

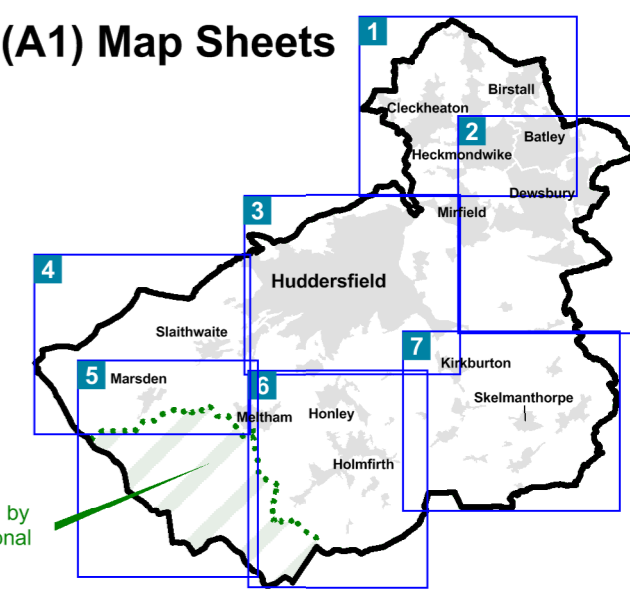
Policies Map (Accepted Options) Publication Draft Local Plan - November 2016

- Green Belt and Green Infrastructure**
- Peak District National Park
 - Green Belt
 - Strategic Green Infrastructure (SGI)
 - Urban Green Space (UGS)
 - Local Green Space (LoGS)
 - Add to Green Belt (AGB)
- Housing, Employment & Other Significant Development**
- Employment (E)
 - Priority Employment Areas (B&S, D&M, HUD, KR)
 - Housing (H)
 - Mixed Use (MX)
 - Land at Storthes Hall (MDGB)
 - Gypsies And Travellers & Travelling Showpeople (GTTs)
 - Safeguarded Land (SL)
- Heritage Assets**
- Archaeological Sites (Class 2) (AS)

- Heritage Assets (cont'd)**
- Conservation Area
 - Registered Battlefield (RB)
 - Registered Parks and Gardens (RPG)
 - Scheduled Monuments (SM)
- Minerals & Waste**
- Minerals Areas of Search (ME)
 - Minerals Extraction Sites (ME)
 - Minerals Preferred Areas (ME)
 - Minerals Infrastructure (MI)
 - Waste Site (W)
 - Waste Site (Safeguarded) (WS)
- Natural Environment**
- Special Protection Area
 - Special Area of Conservation
 - Site of Special Scientific Interest
 - Local Wildlife Sites (LWS)
 - Local Geological Sites (LGS)
 - Dark Peak Nature Improvement Area

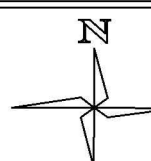
- Shopping Centres**
- Principal Town Centre
 - Town Centre
 - District Centre
 - Local Centre
- Transport**
- Highways England Transport Scheme
- Core Walking, Cycling and Riding Network**
- Existing
 - Proposed
 - Indicative
- Transport Scheme (TS)**
- Junction improvement
 - Committed transport improvement scheme
 - TSS - Mirfield to Dewsbury to Leeds & North Kirklees Growth Zone

Index to (A1) Map Sheets

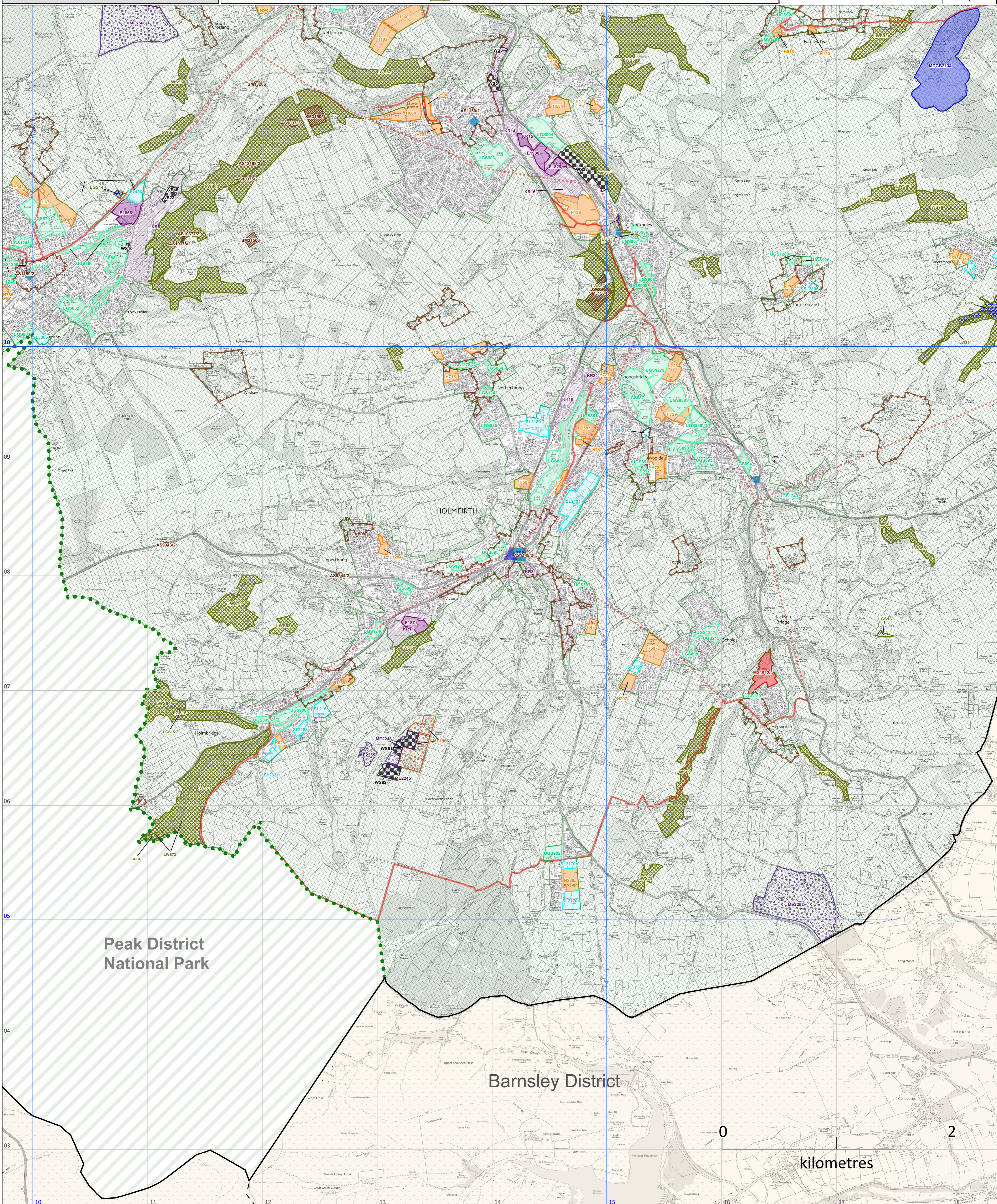


Area administered by Peak District National Park Authority

Map scale: 1:15,000 @ A1
© Crown Copyright and database right 2016. Ordnance Survey 100019241



Site references relate to allocations and policies in: Publication Draft Local Plan - Allocations & Designations and Strategy & Policies



10
09
08
07
06
05
04
03



kilometres